



PHOENIX MECANO



ROSE Standard Enclosures

*Plan the beginning*

*... anticipate the end.*

## ALUMINIUM STANDARD ENCLOSURE - 01.-----

- Robust Aluminium enclosures for Mechanical and Automation Engineering
- Standard Enclosures prepared for acceptance of DIN Rail and Mounting Plate

### Technical Data

Material	Al Si 12, DIN 1725
Ingress protection	Standard: IP 66 to EN 60529 Flange: IP 65 to EN 60529
Impact resistance	>7 joule to EN 50014
Painting	Powder coated
Colour	Silver grey, RAL 7001, RAL 7035, special paint on request.



#### Included in delivery:

Aluminium die cast enclosure consisting of cover, seal, incl. captive +/- stainless steel screws, lower section with 2 or 4 earthing screws, flange enclosures with flange openings (please order flange plates separately)

### Programme Range, Indigenously Manufactured Enclosures

Order No.	W	x L	x H (mm)
01.06 06 03	64	x 58	x 34
01.06 10 03	64	x 98	x 34
01.06 15 03	64	x 150	x 34
01.08 08 06	80	x 75	x 57
01.08 13 06	80	x 125	x 57
01.08 18 06	80	x 175	x 57
01.10 10 08	100	x 100	x 80
01.10 17 08	100	x 164	x 80

Order No.	W	x L	x H (mm)
01.12 22 08	120	x 220	x 80
01.12 22 09	120	x 220	x 90
01.16 16 09	160	x 160	x 90
01.16 26 09	160	x 260	x 90
01.16 36 09	160	x 360	x 90
01.23 20 11	230	x 200	x 110
01.23 33 18	230	x 330	x 180

## STANDARD POLYESTER ENCLOSURE - 02.-----

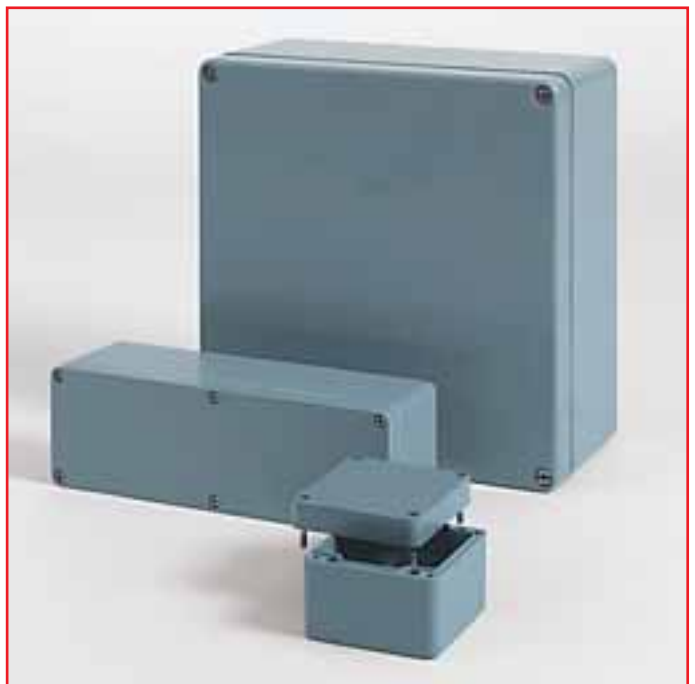
- Robust Plastic Enclosures for Automation Engineering
- Universal Construction
- Individual Finishing Options

### Technical Data

Material	Glassfibre - reinforced, duroplastic Polyester
Ingress protection	IP 66 to EN 60529
Impact resistance	>7 joule to EN 50014
Flammability	VO / self extinguishing, UL 94
Insulation	Fully insulated to VDE 0100
Disruptive Strength	18 kV/mm
Water absorption	Max. 0,7%, ASTM D570
Toxicity	Halogen-free
Surface resistance	> 10 <sup>12</sup> Ohm VDE 0303 DIN 53482
Colour	Grey, similar to RAL 7000, special paint on request.

### Programme Range, Indigenously Manufactured

Order No.	W	x L	x H (mm)
02.08 11 06	75	x 110	x 55
02.08 11 08	75	x 110	x 75
02.12 12 09	120	x 122	x 90
02.12 22 09	120	x 220	x 90
02.16 16 09	160	x 160	x 90



#### Included in delivery:

Plastic enclosure in glassfibre-reinforced Polyester consisting of cover, seal, incl. captive +/- stainless steel screws, base with 2 or 4 earthing screws.

## STANDARD POLYCARBONATE (PC) / ABS ENCLOSURE - 03/33/09. \_ \_ \_ \_ \_

- Light Plastic Enclosures for Industrial Application
- Polycarbonate Enclosure with standard or transparent lid
- Optional EMC version with coating
- IP66 to EN 60529, colours light grey similar to PPL 2703

### Technical Data

Material	Polycarbonate	ABS
Flammability	V 2, UL 94	HB, UL 94
Temperature Range	-40°C to +100°C, CR-(chloroprene) seal	-40°C to + 80°C, CR-(chloroprene) seal

### Programme Range, Indigenously Manufactured Enclosures

POLYCARBONATE	PC WITH TRANSPARENT LID	ABS	
Order No.	Order No.	Order No.	W x L x H (mm)
03.08 08 06	33.08 08 06	09.08 08 06	80 x 82 x 55
03.08 08 09	33.08 08 09	09.08 08 09	80 x 82 x 85
03.08 12 06	33.08 12 06	09.08 12 06	80 x 120 x 55
03.08 12 09	33.08 12 09	09.08 12 09	80 x 120 x 85
03.12 20 08	33.12 20 08	09.12 20 08	120 x 200 x 75
03.12 20 09	33.12 20 09	09.12 20 09	120 x 200 x 90
03.23 30 09	33.23 30 09	09.23 30 09	230 x 300 x 85
03.23 30 11	33.23 30 11	09.23 30 11	230 x 300 x 110

#### Included in delivery:

Plastic enclosure consisting of cover, seal, incl. captive +/- stainless steel screws, base with 2 self-shaping fastening screws for internal fitting.



## ECO / PCI COMPACT ENCLOSURE - 60. \_ \_ \_ \_ \_

- Light thermoplastic enclosure for Industrial application
- ECO version: base with smooth side walls, lids version standard or transparent
- PCI version: base with knock-outs for cable connections

### Technical Data

Material	Flame-resistant PS thermoplastic
Ingress protection	IP 66 to EN 60529
Flammability	VO / self extinguishing, UL 94
Colour	Grey, RAL 7035,

Eco Line	Order No.	W x L x H
ECO 01-6	60.07 07 11	65 x 65 x 57
ECO 01-8	60.07 07 21	65 x 65 x 81
ECO 02-6	60.07 09 11	65 x 94 x 57
ECO 02-8	60.07 09 21	65 x 94 x 81
ECO 03-6	60.09 09 11	94 x 94 x 57
ECO 03-8	60.09 09 21	94 x 94 x 81
ECO 03-6t	60.09 09 12	94 x 94 x 57
ECO 03-8t	60.09 09 22	94 x 94 x 81
ECO 04-6	60.09 13 11	94 x 130 x 57
ECO 04-08	60.09 13 21	94 x 130 x 81
ECO 04-6t	60.09 13 12	94 x 130 x 57
ECO 04-8t	60.09 13 22	94 x 130 x 81
ECO 05-7	60.11 11 11	110 x 110 x 66
ECO 05-9	60.11 11 21	110 x 110 x 90
ECO 05-7t	60.11 11 12	110 x 110 x 66
ECO 05-9t	60.11 11 22	110 x 110 x 90
ECO 06-7	60.13 13 11	130 x 130 x 75
ECO 06-10	60.13 13 21	130 x 130 x 99
ECO 07-6	60.13 13 12	130 x 130 x 75
ECO 07-8	60.13 13 22	130 x 130 x 99
ECO 07-6t	60.09 18 11	94 x 180 x 57
ECO 07-8t	60.09 18 21	94 x 180 x 81
ECO 08-9	60.11 18 11	110 x 180 x 90
ECO 08-11	60.11 18 21	110 x 180 x 111
ECO 08-11t	60.11 18 12	110 x 180 x 90
ECO 09-9	60.11 18 22	110 x 180 x 111
ECO 09-16	60.18 18 21	180 x 182 x 165
ECO 09-9t	60.18 18 12	180 x 182 x 90

Eco Line	Order No.	W x L x H
ECO 09-11t	60.18 18 22	180 x 182 x 111
ECO 09-6t	60.18 18 32	180 x 182 x 165
ECO 10-6t	60.18 25 09	180 x 254 x 63
ECO 10-6	60.18 25 10	180 x 254 x 63
ECO 10-9	60.18 25 11	180 x 254 x 90
ECO 10-11	60.18 25 21	180 x 254 x 111
ECO 10-16	60.18 25 31	180 x 254 x 165
ECO 10-9t	60.18 25 12	180 x 254 x 90
ECO 10-11t	60.18 25 22	180 x 254 x 111
ECO 10-16t	60.18 25 32	180 x 254 x 165
ECO 11-11	60.25 36 11	254 x 355 x 111
ECO 11-16	60.25 36 21	254 x 355 x 165
ECO 11-11t	60.25 36 12	254 x 355 x 111
ECO 11-16t	60.25 36 22	254 x 355 x 165

PCI Line	Order No.	W x L x H
PCI 06-1M	60.07 07 15	65 x 65 x 57
PCI 02-6M	60.07 09 15	65 x 94 x 57
PCI 03-6M	60.09 09 15	94 x 94 x 57
PCI 04-6M	60.09 13 15	94 x 130 x 57
PCI 05-9M	60.11 11 15	110 x 110 x 90
PCI 06-7M	60.13 13 15	130 x 130 x 75
PCI 07-6M	60.09 18 15	94 x 180 x 57
PCI 08-9M	60.11 18 15	110 x 180 x 90
PCI 08-11M	60.11 18 25	110 x 180 x 111
PCI 09-9M	60.18 18 15	180 x 182 x 90
PCI 09-11M	60.18 18 25	180 x 182 x 111
PCI 10-6M	60.18 25 05	180 x 254 x 63
PCI 10-9M	60.18 25 15	180 x 254 x 90
PCI 10-11M	60.18 25 25	180 x 254 x 111
PCI 11-11M	60.25 36 15	254 x 355 x 111



## DO YOU KNOW HOW TO CHOOSE YOUR DESIRED ENCLOSURE ?

Various criteria must be taken into account when selecting an enclosure

- the fitting location (internal or external use, explosion zone, sea-water use etc.)
- the size (depends on the content)
- the protective functions (Ingress Protection, EMC toughness, EX)

The listing below should help you to select the right enclosure to match your special requirements.

### Enclosure Material Selection:

#### Aluminium Enclosures

- Light, robust metal enclosure
- Good chemical resistance
- Can be used in large temperature range
- EMC basic screening (complete screening optional)
- Good finishing options
- Application area : suitable for internal and external use, special version or Ex version for use in aggressive or sea water environments

#### Polyester Enclosures

- Plastic enclosure for rough environments
- Good chemical resistance
- Can be used in large temperature range
- Good Insulation properties
- V-O version (in accordance with UL)
- Application area : suitable for internal and external use, industrial standard enclosures.

#### ABS Enclosures

- Low weight plastic enclosure
- Good chemical resistance
- Deployment in standard temperature range

#### Stainless Steel Enclosures

- Corrosion-proof metal enclosure
- Good chemical resistance
- Can be used in large temperature range
- EMC basic screening
- Application area : suitable for internal and external use, food industry and chemical industry (Ex version)

#### Polycarbonate Enclosures

- Light Plastic enclosure
- Good chemical resistance
- Can be used in large temperature range
- Good insulation properties
- Good finishing options
- Transparent version possible (cover)
- Application area : suitable for internal and external use.

#### Polyamide Enclosures (mobile operating system)

- Light plastic enclosure
- Good Insulation properties
- High impact resistance
- Application area : Manual operation enclosure for control and operation of machines in internal areas

## WHAT IS IP = INGRESS PROTECTION

ROSE enclosures are classified in ingress protection to the generally applicable guidelines contained in EN 60529 and IEC 144 The ingress protection is indicated by an abbreviation, which is always composed of the two letter IP and two digits relating to the protection level.

### Protection class for contact and foreign body protection

First Digit	Designation
0	No Protection
1	Protection against vertical falling drip water
2	Protection against medium-sized foreign bodies
3	Protection against small foreign bodies
4	Protection against grain-shaped foreign bodies
5	Protection against dust deposits
6	Protection against dust entry

### Protection class for water protection

First Digit	Designation
0	No Protection
1	Protection against vertical falling drip water
2	Protection against oblique falling drip water
3	Protection against water spray
4	Protection against splashing water
5	Protection against water jets
6	Protection when flood
7	Protection when immersed
8	Protection when submerged

**Note:** The ingress protection indicated for the enclosures is based on non-processes enclosures as supplied. Aging and temperature fluctuations can lead to a diminution of the ingress protection.



**PHOENIX MECANO**

**Phoenix Mecano (India) Limited**

Pirangut Industrial Area, Post Ghotawde,  
Plot 388/389, Village Bhare,  
Taluka Mulshi, District Pune - 412 108.

Telephone: ++91 20 2292 9203 / 04 / 6674 5000  
Fax: ++91 20 2292 9205

email: admin@pmipl-online.com  
<http://www.phoenixmecano.co.in>