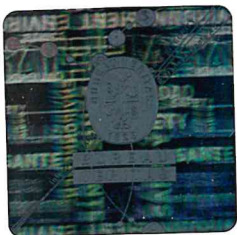


- (1) **QM-Notification**
- (2) **for approval of the quality assurance of the production process**
- (3) Equipment and protective systems intended for use in potentially explosive atmospheres – **Directive 2014/34/EU**
- (4) Certificate number: **EPS 20 ATEX Q 074**
- (5) Product Category: Electrical equipment and components
- (6) Manufacturer: Phoenix Mecano (India) Private LIMITED
- (7) Address: Plant III, Gat No 408,410 & 412, Village – Urse, Taluka - Maval,
Talegaon Urse Road, Dist. Pune – 410506, India
- (8) Bureau Veritas Consumer Products Services Germany GmbH, notified body No. 2004 in accordance with Article 21 of the Council Directive 2014/34/EU of February 26th 2014, certifies that the manufacturer maintains a quality assurance for the product, which conforms with Annex IV of the Directive.
- (9) This certificate is based upon the Audit Report No. 20TH0117 issued on March 25th, 2020 and is valid until March 24th, 2023. The results of the quality assurance re-assessment will become part of the certificate. The certificate can be withdrawn if the manufacturer does no longer meet the requirements of appendix IV.
- (10) According to article 16 (3) of the Directive 2014/34/EU, the CE-marking shall be followed by the identification number 2004 identifying the notified body involved in the production control stage.



Certification department of explosion protection

Hamburg, June 16th, 2020

H. Schaffer



(11) **Appendix**

EPS 20 ATEX Q 074

List of the EC-type examination certificates covered by the audit:

Item	Product	Protection mode	Certificate
1	Al-Ex-enclosure stocked	d, e, ia [ia] mb, tb	PTB 00 ATEX 1063
2	Polyester-Ex- enclosure stocked	d, e, ia [ia] mb, tb	PTB 00 ATEX 1002
3	Al-Ex-empty enclosure	e, tb	PTB 98 ATEX 3101 U
4	Polyester-Ex-empty enclosure	e, tb	PTB 01 ATEX 1061 U
5	Hand operation Ex-empty enclosure	e, tb	PTB 02 ATEX 1076 U
6	Stainless steel-Ex-empty enclosure	e, tb	PTB 00 ATEX 1101 U
7	Stainless steel-Ex- enclosure stocked	d, e, ia [ia] mb, tb	PTB 00 ATEX 1052
8	Thermoplast-Ex- enclosure stocked (CS Box)	d, e, ia/ib [ia/ib] mb, tb	PTB 08 ATEX 1109
9	Polyester-Ex-empty enclosure (Mining)	e, ia	IBExU 06 ATEX 1065 U
10	Terminal Box Enclosure TBE Series	db, tb	ITS 14 ATEX 18169 X
11	Terminal Box Enclosure GUB Series	db, tb	ITS 15 ATEX 18212 X
12	Terminal Box Enclosure EJB Series	db, tb	ITS 15 ATEX 18302 X
13	Terminal Box Enclosure IJB Series	db, tb	ITS 15 ATEX 18301 X
14	Control Accessories CA Series	db, tb	ITS 16 ATEX 1 18397 U
15	IJB, empty enclosure	d	DEKRA 18 ATEX 0 112 U
16	EJB, empty enclosure	d	DEKRA 18 ATEX 0 113 U
17	TBE, empty enclosure	d	DEKRA 18 ATEX 0 114 U
18	GUB, empty enclosure	d	DEKRA 18 ATEX 0 115 U
19	CA, control accessories	d	DEKRA 18 ATEX 0 116 U
20	IJB equipment	d	DEKRA 18 ATEX 0 117 X
21	EJB equipment	d	DEKRA 18 ATEX 0 118 X



**BUREAU
VERITAS**



22	TBE equipment	d	DEKRA 18 ATEX 0 119 X
23	GUB equipment	d	DEKRA 18 ATEX 0 120 X
24	Power ditribution housing	e, d, ia, tb	PTB 03 ATEX 1 119
25	Empty enclosure	eb, tb	PTB 20 ATEX 1 005 U
26	Zinc-Aluminium-Ex empty enclosure	ia	IBExU 05 ATEX 1 187 U